

154°25'0"W 154°20'0"W 154°15'0"W 154°10'0"W 154°5'0"W 154°0'0"W 153°55'0"W 153°50'0"W 153°45'0"W 153°40'0"W 153°35'0"W

68°32'30"N  
68°30'0"N  
68°27'30"N  
68°25'0"N  
68°22'30"N  
68°20'0"N

68°32'30"N  
68°30'0"N  
68°27'30"N  
68°25'0"N  
68°22'30"N  
68°20'0"N

**Killik River 1**  
ASRC Lands

 Killik River Easement\*  
 Killik River Easement Float Plane Access

**Killik River Easement:**  
An easement for recreational purposes, including, without limitation, boating, hiking, fishing and camping, but expressly excluding hunting, on and over the bed of the Killik River and to provide access between the Killik River and Udrivik Lake and Imiaknikpak Lake, respectively.  
A linear streamside easement for recreational purposes as defined above, extending one hundred (100) feet upland of and parallel to the ordinary high watermark on both banks of the Killik River, including any lakes that are an integral part thereof.  
An easement for float plane access to Lake Udrivik, Imiaknikpak Lake and the Killik River within one mile of its confluence with the Colville River for recreational purposes as described above, including the right of float planes to land or take off upon, and to taxi upon, the aforementioned lakes and river and to beach float planes upon their shores.  
This easement was granted by ASRC in 1983.

**Killik Airstrip** ↑  
**(No Public Access)**

68 26 21.82 N  
153 38 32.75 W

68 22 54.06 N  
154 20 44.84 W

68 22 54.06 N  
154 04 11.05 W

68 22 54.06 N  
153 38 32.75 W

68 22 00.00 N  
154 20 44.84 W

**Kaikshak Hill**

**GATES OF THE ARCTIC NATIONAL PARK**



Notes: This map was created by Arctic Slope Regional Corporation (ASRC) on 01/25/2009. ASRC is not responsible for any discrepancies or any inaccuracies in the data. The official source for current land status resides with the U.S. Bureau of Land Management. For more information contact the ASRC Land Department at 907 339-6017.

\*All commercial users are required to have permit from the North Slope Borough



154°25'0"W 154°20'0"W 154°15'0"W 154°10'0"W 154°5'0"W 154°0'0"W 153°55'0"W 153°50'0"W 153°45'0"W 153°40'0"W 153°35'0"W

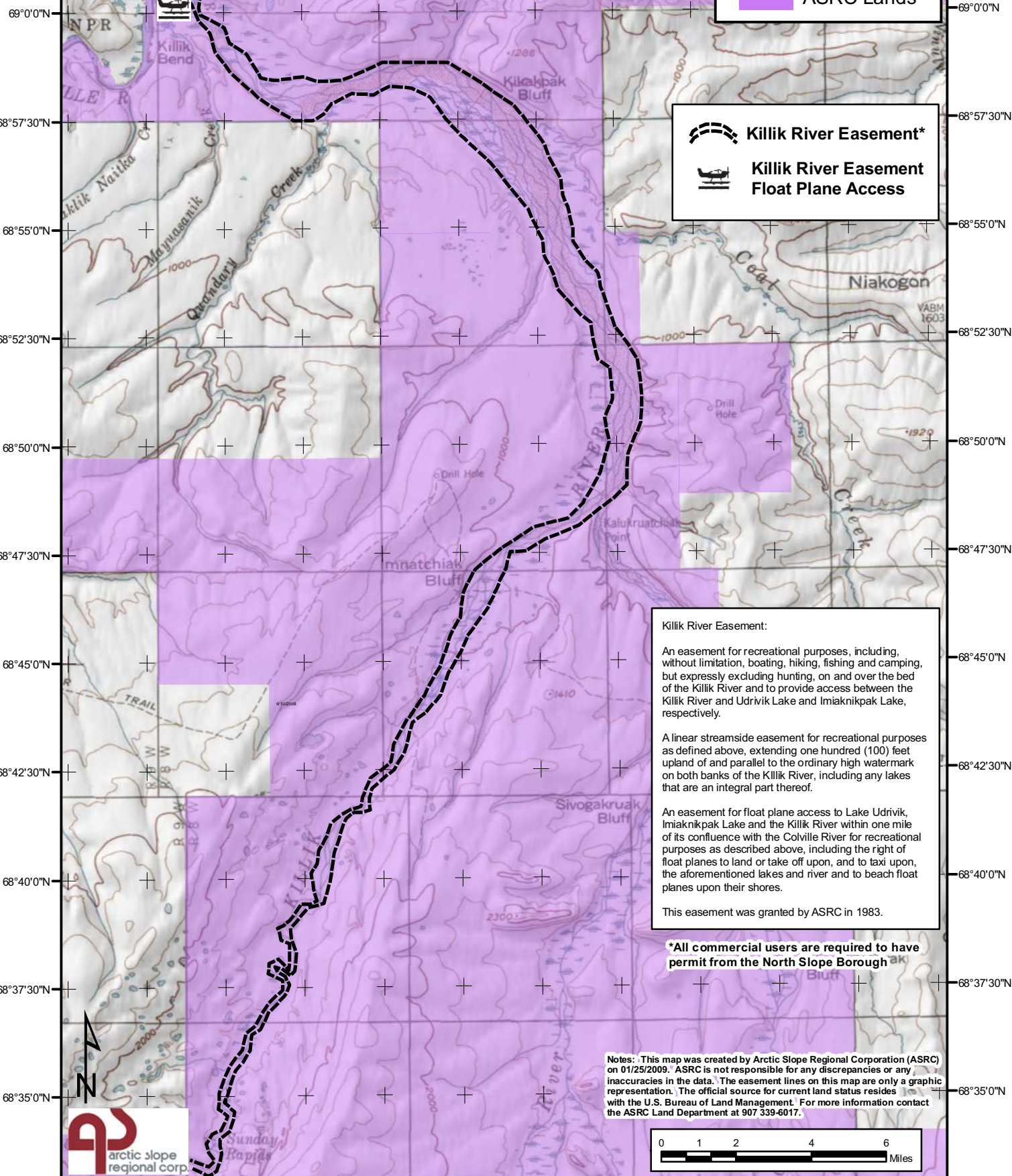


154°0'0"W 153°55'0"W 153°50'0"W 153°45'0"W 153°40'0"W 153°35'0"W 153°30'0"W 153°25'0"W 153°20'0"W 153°15'0"W 153°10'0"W 153°5'0"W

# Killik River 2

 ASRC Lands

 Killik River Easement\*  
 Killik River Easement Float Plane Access



**Killik River Easement:**

An easement for recreational purposes, including, without limitation, boating, hiking, fishing and camping, but expressly excluding hunting, on and over the bed of the Killik River and to provide access between the Killik River and Udrivik Lake and Imiaknikpak Lake, respectively.

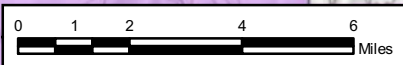
A linear streamside easement for recreational purposes as defined above, extending one hundred (100) feet upland of and parallel to the ordinary high watermark on both banks of the Killik River, including any lakes that are an integral part thereof.

An easement for float plane access to Lake Udrivik, Imiaknikpak Lake and the Killik River within one mile of its confluence with the Colville River for recreational purposes as described above, including the right of float planes to land or take off upon, and to taxi upon, the aforementioned lakes and river and to beach float planes upon their shores.

This easement was granted by ASRC in 1983.

**\*All commercial users are required to have permit from the North Slope Borough**

Notes: This map was created by Arctic Slope Regional Corporation (ASRC) on 01/25/2009. ASRC is not responsible for any discrepancies or any inaccuracies in the data. The easement lines on this map are only a graphic representation. The official source for current land status resides with the U.S. Bureau of Land Management. For more information contact the ASRC Land Department at 907 339-6017.



154°0'0"W 153°55'0"W 153°50'0"W 153°45'0"W 153°40'0"W 153°35'0"W 153°30'0"W 153°25'0"W 153°20'0"W 153°15'0"W 153°10'0"W 153°5'0"W

